


PROMINENCE
ESTATES



RESIDENTIAL
PROPERTY EXPERTS

COVENTRY, WARWICKSHIRE
& LEAMINGTON SPA

MELVILLE ROAD,
COVENTRY, CV1 3AL

£485 PER CALENDAR

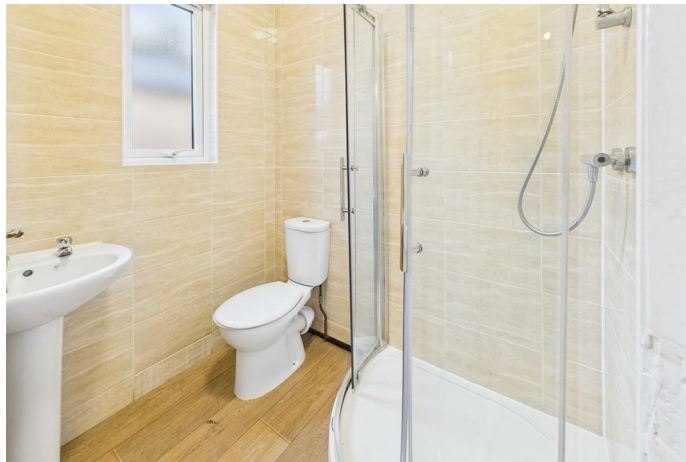
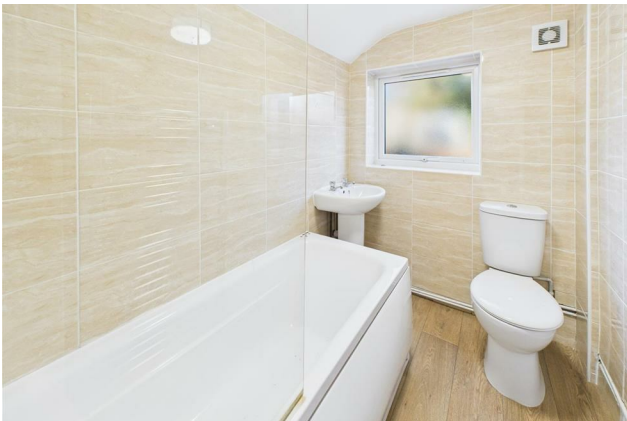
MELVILLE ROAD

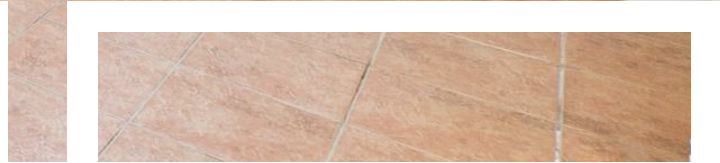
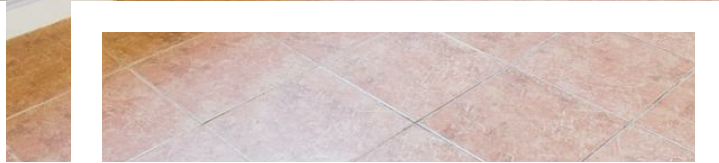
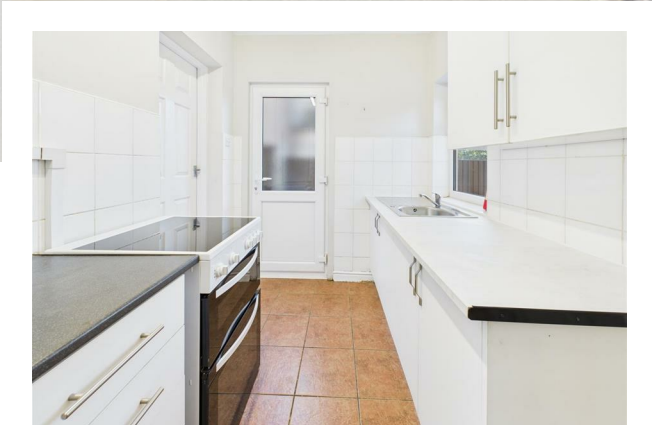


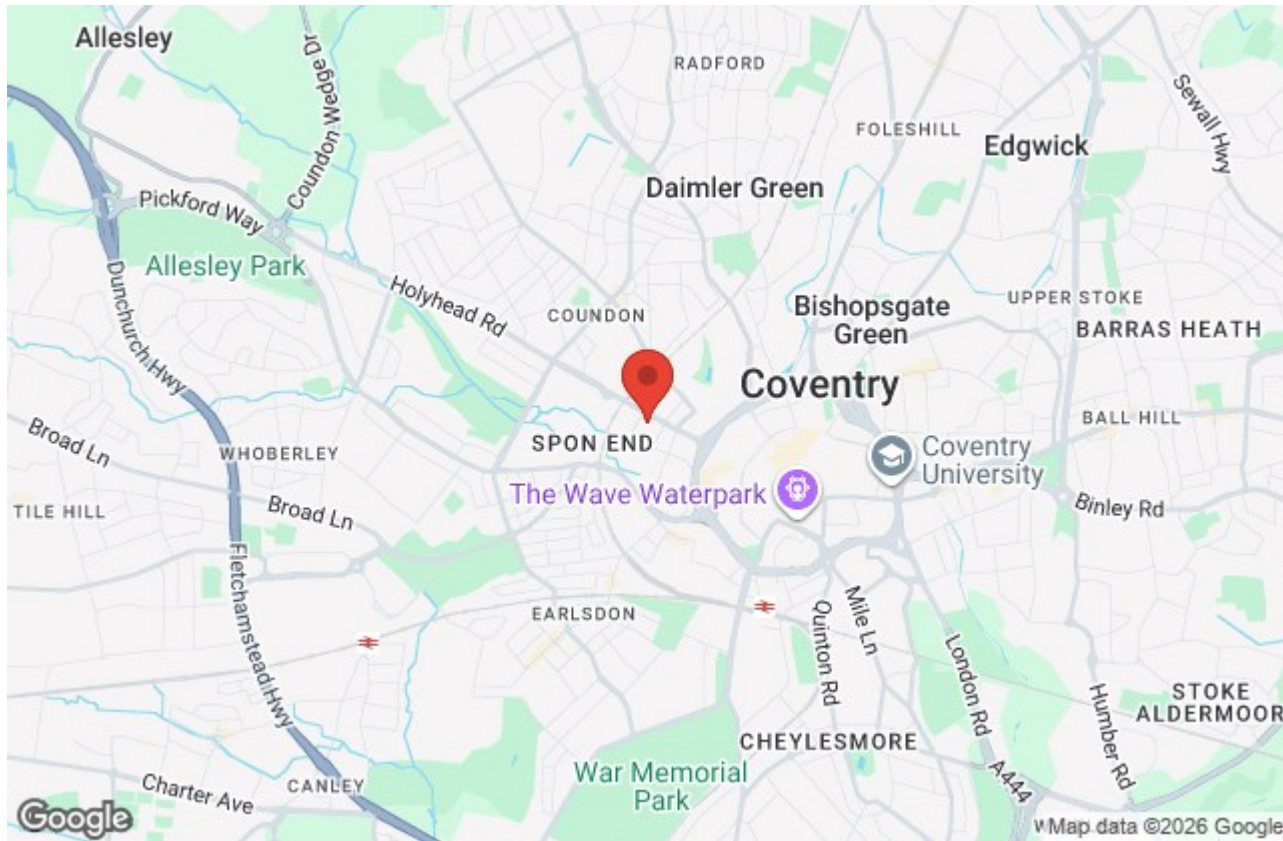
PROMINENCE
ESTATES

0% Deposit Scheme Available -A newly refurbished and well-presented room is now available in this spacious 5-bedroom shared house located on Melville Road in Coventry, offering an excellent option for single working professionals seeking a comfortable and modern place to live. The property has been fully redecorated throughout, featuring fresh contemporary decor, newly fitted carpets and brand-new furniture in both the bedrooms and communal areas, creating a clean, bright and welcoming environment. Residents share two modern bathrooms and have access to a functional communal kitchen that includes essential facilities such as a washing machine and a fridge freezer. With all bills included in the rent, this home provides a straightforward and cost-effective living arrangement in a desirable location close to local shops, transport links and

major routes across Coventry. The room is available now.







Prominence Estates
5 Queen Isabels Avenue,
Cheylesmore,
Coventry,
CV3 5GE

02476 309 826
lettings@prominenceestates.com
www.prominenceestates.com


PROMINENCE
ESTATES